



Nebraska Section Society for Range Management Newsletter



NE Section Council

President:
Jon Soper

Incoming President:
Bob Broweleit

Past President:
Curtis Talbot

Council Members:
Cindy Tusler
Karla Jenkins

Secretary-Treasurer:
Angie Peterson

Newsletter Editor:
Kristin Miller

Inside this issue:

High School Youth Forum Update **2**

CSC Ag Club Updates **3**

Scholarships Awarded **4**

Summer Tour Highlights **6**

2012 Range Camp **7**

UNL Range Club Updates **9**

Historian's Report **10**

Section Meetings Held in Ogallala on October 9-11

The Nebraska Section held another successful annual meeting, technical training, and tour in Ogallala, NE on October 9-11, 2012. The focus of the program was Maximizing Potential on Your Ranch: Incorporating Eco-tourism and Recreation.

The morning program began after the business meeting with two presentations from high school students competing to be High School Youth Forum delegates (see article on page 2). Then Graduate students from UNL, Ellen Miller, Ben Beckman, and Ben Schiltz, presented information from each of their respective projects.

The afternoon program began with Dr. Walt Schacht discussing "Rangelands of Namibia" which

highlighted the year he recently completed working with ranchers in that African country. Then UNL students Lars Anderson and Laura Snell summarized their experiences this summer in Namibia working on game farms and nature preserves.

An NGO perspective on eco-tourism and recreation was presented by John Heston with The Nature Conservancy.

The highlight of the program that brought in all into perspective was a presentation by SS Switzer from Calamus Outfitters at Burwell. Her family is engaged in an extensive outfitting and eco-tourism operation in Nebraska.

The students from CSC and UNL once again brought unique

Items to be sold at the crazy auction to raise money for students their travel to the annual meetings to be held in Oklahoma City in 2013.

The evening concluded with the banquet. There were no awardees this year (so be thinking about nominating a deserving person for 2013), however two scholarships were presented (see article on page 3).

The tour was held on Thursday and traveled to Keystone Sod Farm and the Eldridge Unit of the Rex Ranch.

Congratulations and thanks to Jon Soper for arranging a great meeting!

President's Message from Jon Soper

I would like to thank everyone that was able to attend the Section's annual meeting in Ogallala. Our membership has a great diversity of backgrounds and interests and the Section meeting is a great place to meet other folks with a passion for range management. Seeing old friends and making new ones highlight the importance of building relationships that keep the Nebraska Section strong and active.

As with all section meetings, the 2012 meeting would not have happened without a lot of help from people behind the scenes. I need to offer a big thank you to Daryl Cisney and Angie Peterson for answering questions and handling all the details in preparation for the meeting.

All volunteer organizations are dependent on dedication and contributions of the membership and the Nebraska Section is no

exception to this fact. When using volunteers, there is a need to bring new personnel and ideas, as well as, give the previous members a well-earned break. Nick Simonson and Casey Lancaster have served as the Co-Chairs of the Scholarship Committee for a number of years. Nick has decided to step-down from this committee and Casey will step-down from the Co-Chair position, but will continue to serve

(continued on page 3)



Jeff Nichols instructing campers on evaluating range sites at the 2012 Nebraska Range Camp

Do you have information you want to share with other SRM members? Send an email to kristin.miller@ne.usda.gov and she'll send out a Range Clip.



Photo by Courtney Miller, NRCS, Ogallala/ North Platte

SRM Awards... by Curtis Talbot, Awards Chairman

It's not too early to begin thinking about nominations for the Nebraska Section awards. As you likely know, the Section sponsors two annual awards. The first is the **Rangeman's Award**, which recognizes ranchers for outstanding success in management and improvement of Nebraska rangeland resources. The recipient need not be a member of the SRM (although we'll try hard to convince them J), may be a man, woman, or group, and must not have received this award within the previous six years. The second award is the **Range Management Service Award**, which recognizes professionals for outstanding services in the development and use of Nebraska rangeland resources. This award is reserved specifically for members of the Section.

In addition to the Section awards, Section members are also eligible for recognition at the parent society level. These awards include (with a short description from the SRM webpage):

Frederic G. Renner Award: The

premier Society award requires SRM membership and sustained accomplishments or contributions to range management during the last ten years.

W.R. Chapline Land Stewardship Award: Requires SRM membership and effective maintenance or improvement of range resources with lasting efforts.

W.R. Chapline Research Award: Requires SRM membership and exceptional and sustained research accomplishments related to rangelands.

Sustained Lifetime Achievement Award: Designed to recognize SRM members for long-term contributions to SRM and range management. Requires tangible evidence of outstanding lifetime contributions to the art and science of range management and continued SRM involvement at both the Section and Society levels.

Outstanding Achievement Award: SRM membership not required. Awarded for out-

standing achievement (eminently noteworthy) in any range management-related area. Organizations (e.g., agencies, commodity groups) are not eligible for this award. Teams, whose accomplishments are individually inseparable, are eligible.

Outstanding Young Range Professional Award: Requires SRM membership and recognizes superior performance and leadership potential in any range-related area. Nominee must be less than 40 years of age on January 1st of the year the award is conferred.

Fellow Award: Requires SRM membership, continuous for at least ten years, in recognition of service and contributions to the Society.

Some have discussed nominations with me already, for which I'm appreciative. In a few months, I'll begin earnest solicitations, so be thinking of those who are worthy of the recognition that comes with these awards.

High School Youth Forum Competition at Section Meetings

Two students that successfully complete the Nebraska Youth Range Camp this summer gave presentations at the Nebraska Section Society for Range Management meeting in Ogallala, Nebraska on October 10, 2012. Cody McBride from Burwell gave a presentation titled "Controlling Brush and Weeds" and Cheyenne Doremus from Polk gave a presentation titled "Drought".

Cody will be representing the Nebraska Section at the Annual Society for Range Management Meeting in Oklahoma City, Oklahoma on February 3 - 6, 2013. He will join peers from across the United States and Canada to participate in the High School Youth Forum where he will give his presentation, attend a professional interaction dinner, go on an ecological field tour, and attend many other events. Come listen to Cody's presentation if you come to Oklahoma City on February 5!



President's Message *(continued)*

as a committee member. Jess Milby and Justin Lemmer have agreed to join the Scholarship Committee. I will give everyone an update once the new structure of the committee is finalized. Thank you to Nick and Casey for all of your hard work over the years.

Similar to last year, there has been a change in the selection of Section officers. Traditionally, Cindy Tusler would be the new president-elect and would plan the 2013 Section Meeting. However, Cindy is an Army Reservist and will likely be deployed to Afghanistan during 2013 to serve as a member of the National Guard's Ag Development Team #4. If deployed, Cindy will serve as a Rangeland Management Specialist, with the primary

mission of training the Afghani extension educators. On behalf of the Section, we wish you and your team safety and look forward to hearing about your experience.

Given Cindy's likely absence, Bob Broweleit has agreed to serve as the president-elect and Cindy will continue to serve as a Council Member during her deployment. Thank you to both of you for your willingness to serve the Section in these capacities.

In other news, I will be developing a Facebook page for the Nebraska Section. The major focus of this page will be to increase awareness of the Section's activities. This page will serve as a complimentary source of information to the Section's website and

newsletter. If you have any comments or suggestions feel free to contact me by email: jsoper3@unl.edu.

If you are not aware, SRM's 2013 annual meeting will be February 2-8 in Oklahoma City, OK. I'm currently planning a location for Section dinner, so I will let you know when the plan is finalized. This meeting is within reasonable driving range, so I look forward to having Nebraska well represented in Oklahoma City.

CSC Ag Club Happenings submitted by Torie Lindsey

The Chadron State College Ag Club has had a great fall semester so far. We started things off with a barbecue in the park as a way to welcome new students. We also went to the SRM meeting in Ogallala after gathering generously donated items for the Crazy Auction.

This week (October 22-27) we are taking in the Homecoming festivities. We decorated a bed sheet with this year's theme and look forward to having a float in the parade.



CSC Ag Club's decorated bedsheet for the Homecoming celebration. The theme was

In an effort to diversify our meetings, we will be inviting speakers to the meetings to visit with us about careers in the agriculture field as well as incorporating different types of activities after meetings. Preliminary plans are being made for winter and spring activities, which we are looking forward to.

The Chadron State Ag Club would like to extend our appreciation to everyone involved in the Crazy Auction at the SRM meeting in Ogallala this year, including those who do-



CSC Ag Club's President, Torie Lindsey at the Section Business Meeting.

nated items, as well as purchased items, the auctioneer, Quality Inn Motel, and everyone involved in setting up and accomplishing the Auction. We are very grateful for the funds we were able to raise!

What screws us up most in life is the picture in our head of how it is supposed to be.

Notes of Thanks

The Range Management Club at the University of Nebraska-Lincoln wishes to sincerely thank everyone involved with this year's Crazy Auction including businesses and individuals who donated items, all of you who bid like crazy on those items, and our auctioneer. We were able to raise over one thousand dollars!

The proceeds from the Crazy Auction are critical in financing our trips to the annual meetings of the Society for Range Management. We hope to have 10 to 15 Range Club members at the SRM meeting in Oklahoma City. Thank you so much for your continued support!

Sincerely, UNL Range Club



Two Scholarships Awarded at Section Meetings submitted by Casey Lancaster

The Nebraska Section presented two scholarships in the amount of \$1,000 each to students in the field of range management at the annual meetings. Once again, there were a number of highly qualified candidates applying for the scholarships. Even though only two scholarships were awarded, there are many brilliant young minds studying range management.

The first recipient of the 2012 Nebraska Section Society for Range Management Scholarship was Kyra Baldwin, a sophomore at the University of Nebraska at Lincoln. Kyra is from Mitchell, and is the daughter of Bill and Queeda Baldwin. Kyra's agriculture education started early working on the ranch with her parents. She graduated from Scottsbluff High School. During school, Kyra was involved in range judging, land judging, Range Camp, SRM High School Youth Forum, Nebraska

Youth Beef Leadership Symposium, FFA, and 4-H. Kyra is currently pursuing a double major in Grazing Livestock Systems and Animal Science. Kyra is a member of the UNL Range Management Club, Pre-Veterinary Club, and Nebraska Beef Industry Scholars Program. With Kyra's strong leadership qualities and wealth of knowledge, both hands-on and academically, Kyra is a great student representative for the Nebraska Section SRM.

The second recipient of the 2012 Nebraska Section Society for Range Management Scholarship was Kristie Olmer, from Chadron State College. She is the daughter of Bernice Olmer from Madison, NE and graduated from Madison High School. While attending school, Kristie was a member of Dragonfire Danceline, Band, Flag Corp, National Honor Society, Student Council, Quiz Bowl, and Bits & N-Bridles 4-H. After graduation, Kristie

Management. She is a member of the Ag Club at CSC. Kristie has a bright future in the field of range management and has demonstrated the qualities of a genuine leader to carry the vision of SRM into the future.

One of the two scholarships is made possible with a \$1,000 anonymous donation to the Scholarship Fund. It is truly a blessing to receive such a generous and selfless gift. In a time when many question if the world will be



Kyra Baldwin, UNL student from Mitchell, NE receives the Section scholarship from Casey Lancaster. Kristie Olmer, CSC student from Madison, NE was not able to attend the banquet.

decided to pursue her love for horses and attended Central Wyoming College. As she furthered her knowledge of horses, she also gained an interest range management. When she decided to pursue her new interest, the obvious choice for her was Chadron State College. Kristie is currently pursuing a degree in Range-land Management with an emphasis in Rangeland Livestock

left a better place for future generations, the Nebraska Section is honored to have a benefactor who is investing in students pursuing a range management degree and working to make the world better place, both now and for future generations. On behalf of the Scholarship Committee, and the entire Nebraska Section, Thank You.

Gross Seed Company

"Serving The Sandhills Over 25 Years"

John C. Gross

41616 US Highway 20
Bus: (402) 722-4215
Fax: (402) 722-4415

Johnstown, NE 69214-9502
Cell: (402) 340-0578
e-mail: groseed@threeriver.net

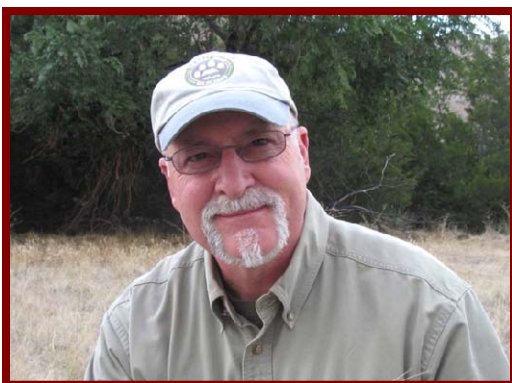
FULL LINE OF SEED
Alfalfas
Cool- & Warm-Season
Grasses
Summer-Annual Forages

EQUIPMENT
Grain Drills
No-Till Drills
Alfalfa &
Grassland Drills

Four Simple Steps to Skillful Grazing Management

The Nebraska Grazing Lands Coalition and UNL Extension are hosting former UNL Range Management Specialist, Pat Reece, on a four day, eight stop traveling road show across Nebraska. Pat is the owner of and senior consultant at Prairie & Montane Enterprises, specializing in rangeland assessment and management in NE, WY, CO, and SD. Previously, Pat's many years with the University of Nebraska were focused on conducting research and developing innovative educational material and programs designed to optimize grazing management. He has been an invited speaker throughout the Great Plains from Texas to the Canadian provinces.

After forage resources and grazing management practices are discussed by local ranchers, Pat will briefly outline four simple guidelines for sustaining profitable range livestock-production enterprises. Each guideline will include a short presentation followed by open discussion to provide the best possible opportunity for participant interaction.



Striving for resilient plant communities will be the first topic. Plant recovery after grazing requires soil water and simultaneously favorable air temperatures. Absence of livestock does not guarantee the recovery of preferred plant species. Timing of rest or deferment is the critical issue. Learn how to make year-to-year changes in pasture-use sequences to give the most-in-need pastures the best opportunity to recover in the subsequent year. Pat will also provide a simple guideline for determining the number of pastures needed to optimize plant resilience.

Secondly, management decisions directly affect long-term carrying capacity of rangeland and livestock performance. Learn the true meaning of moderate stocking rate and which indicators to look for to sustain high levels of range condition and animal performance.

During the past decade, the magnitude and frequency of drought have substantially increased. Don't let avoidable circumstances end your ranching career. The third step to

skillful grazing management is preparation of a drought plan based on reliable indicators of forage deficits and estimated livestock use of forage. Timely management actions will greatly reduce loss of equity and the risk of long-term reductions in herbage production potential.

The final guideline will focus on changes in management needed to accomplish different sets of objectives as people and resources in your enterprise change over time. Learn how to use simple indicators and a limited number of records to optimize these adaptive changes in management.

8 Nebraska Locations in Four Days (contact the local extension educator to register)

Monday, November 26, 2012

10 AM – 2 PM Community Building, Tecumseh, NE

5 PM – 9 PM Thayer County Fairgrounds, Deshler, NE

Tuesday, November 27, 2012

10 AM – 2 PM Community Center, Bloomfield, NE

5 PM – 9 PM Legion Hall, Burwell, NE

Wednesday, November 28, 2012

10 AM – 2 PM NCTA Ag Industry Education Center, Curtis, NE

5 PM – 9 PM (MT time) UNL Gudmundsen Sandhills Laboratory, Whitman, NE

Thursday, November 29, 2012

10 AM – 2 PM (MT time) 4-H Bldg, Dawes Co. Fairgrounds, Chadron, NE

5 PM – 9 PM (MT time) Kimball Event Center, Kimball, NE



"A different kind of seed company."

**Grasses for
CRP / CREP
Prairie Restoration
Grazing**

Nebraska Certified Grass Seed Producer

**NATIVE WARM &
INTRODUCED COOL SEASON
GRASSES**

Mixed to your specifications
Call for Price Quotes

800-622-4727
ARROW SEED CO., INC.
Broken Bow, NE

Joint SRM/GLCI Tour Held in June submitted by Scott Cotton

On June 19, 2012 the Nebraska Grazing Lands Coalition, with the support of the Nebraska Section of the Society for Range Management, held a multi-stop tour in the western Sandhills of Nebraska.

Approximately 230 people attended the tour. The group was dominated by ranchers from 15 counties and three states but also included agency and university representatives.

The tour began at the Abbot Unit of the Rex Ranch approximately 20 miles south of Ashby, NE where the Ranch Manager Kory Mack discussed how the keep cattle grouped tightly to effectively impact and stimulate grass to grow stronger. Lunch was passed out to eat as we drove.

Following the stop at the Abbot Unit the group moved 40 miles south to the Tippetts-Myers Ranch



The tour group listens to Kory Mack, Abbot Unit Ranch Manager provide an overview of their operation.

while preserving the landscape and traditional western values.

Following the Myers stop, the caravan (which took almost 25 minutes to collect at each stop) visited the northern part of the Turner Sandhills Enterprises which raise bison. They were fed cake so participants could get a close view of the herd. Alan Oberney, Ranch Manager, dis-

cussed how relationships with neighbors were developed and maintained, how the bison were harvested and marketed, among many other topics.

They day concluded at the Turner Sandhills Enter-

prises Blue Creek headquarters near Lewellen for a cookout that included beef and bison. There was also a panel of the three ranch managers from the tour stops. They made brief presentations,

discussed some of their ranching and grazing philosophies, and answered questions from the crowd.



Alan Oberney Ranch Manager for Turner Enterprises discusses many aspects of ranching with bison.



The second stop highlighted the Tippetts-Myers Ranch. Lynn Myers enlightens the crowd in his typical style.

where owner and Ranch Mentor Lynn Myers discussed how the unique characteristics of the Nebraska Sandhills are well-suited to producing calves that generate exceptional returns on grid sales

Member's Corner

Did you know that SRM is relying more upon electronic communication every year? It is very important for each member to take the time to log into the SRM website and update their profile. There are many email addresses that are out of date that need to be replaced with a current one.

SRM is also utilizing social media regularly to get information to members more timely. There is a Facebook page for the parent society, and soon, the NE Section will have our own Facebook page. Information will be sent out to membership when it is up and running.

Finally, check out the redesigned and updated Section website at www.nesrm.org.

If you have questions or concerns regarding your membership, please contact Allen Press at 800-627-0326 and ask for SRM. Or you can visit the website at www.rangelands.org. If you would prefer to have a "local" person assist you, or you have concerns you want elevated to the Board, please contact one of the council members or Kristin Miller, the membership chair.

CSC Ag Club is selling 2013 pocket calendars. Get yours for \$5 today. Email Chuck Butterfield at cbutterfield@csc.edu

2012 Range Camp Successful submitted by Shelly Taylor

The Nebraska SRM Section's 49th Annual Youth Range Camp was held June 11-15, 2012 at the Nebraska State 4-H Camp, located in the Nebraska National Forest near Halsey. Range Camp is designed to be a blend of educational, team-building, and recreational activities, with the primary emphasis being on range, livestock, and ranch management.

Twelve adults contributed a week of their time to be crew leaders and Camp support. Crew Bosses included: Daryl Cisney, Karla Jenkins, Justin Lemmer, Calla Jarboe, Austin Horn, Brad Carlson, Casey Lancaster, Lisa McMillan, Jeff Nichols, Molly Seefus, Sara Winslow, and Shelly Taylor.

The financial support of sponsoring ranches is an essential part of Range Camp's success. The 2012 sponsoring ranches, many of which have sponsored more than 10 years, included Adkinson Inc - Boyd and Shirley Adkinson of Benkelman; Diamond Bar Ranch Co - Virginia, Robert, and Suzanne Jones and family of Stapleton; Enfield Ranch - Terry Enfield Family of Arthur; Kelly Ranch LLC - Kelly Family of Sutherland; KM Grain and Livestock LLC - Miller Family of Sidney; Reed Hamilton Ranch Inc - Hamilton Family of Thedford; Maddux Cattle Company - Jack & Carol Maddux of Wauneta; Salzman Cattle Company - Sid Salzman and Family of Ainsworth; the Lazy L B Ranch - Gary Greder of North Platte; the Neal Hansen Ranch of Sutherland, and the Simonson Ranch - Pat & Wanda Simonson and Family of Seneca.

Additionally, 14 professionals supported Range Camp by leading tours and providing presentations on range related information. The professionals included the Rodocker Ranch (Wayne, rancher from Halsey); Dr. Chuck Butterfield (Chadron State College); David Gibbens (West Holt High School); Teyvyn Baldwin (Scottsbluff High School); Kassidy Linabery (Valentine High School); Laura Gorecki (Elba High School); Dr. Jerry Volesky (UNL); Jim Stubbendieck (UNL); Walt Schacht (UNL); Laura Snell (UNL); Leah Carson (NRCS); Dr. Matt Stockton (UNL); Michael Croxen (Forest Service); and Tim Buskirk (Forest Service).

We provide the top ranch crew or team awards annually. This year's winning ranch crew was the Reverse S S Crew - Adkinson Inc. The Crew Boss or team leader was Jeff Nichols.

The top individuals are scored on plant identification, range site identification, ranch planning, a comprehensive range exam, notebooks and attitudes. These Campers are offered the opportunity to represent Nebraska at the International SRM Meeting by competing in a range related presentation contest at our Annual Nebraska Section SRM Meeting.

Our Overall Top Camper was Taylor Hornickel from Ord. Taylor will be a senior at Ord High School. Our Top First year Camper was Jared Crosley from Wilsonville. Our Runner up First Year Camper was Kodi Gehl from Ericson. The top two first year campers received belt buckles. The top returning Camper received a plaque that includes the ranch sponsors brands and the SRM medallion.

First Year Campers received the Weeds of the Great Plains book. Returning campers received the Weeds of the West. Top exam individuals were awarded books for their efforts in the comprehensive exam that covers all the information that was presented throughout the week.

The Nebraska Grazing Lands Coalition and many of Nebraska's Natural Resource Districts continue to be invaluable sponsors and supporters of our Camp.

The Nebraska Youth Range Camp has a Facebook page where you can view photos from this year's Range Camp, find information about upcoming Range Camps and other associated events, and network with past Campers and supporters. Please "Like" us so you can receive our updates!

Range Camp is one of the Nebraska SRM Section's most important annual activities. Continued success is dependent upon the support, dedication, and active involvement of Section Members. The support of Nebraska ranchers, professionals, and other sponsoring organizations is also essential for a successful Camp. The 2013 Nebraska Youth Range Camp is scheduled for June 10-14, 2013. This will be our 50th Range Camp! Additional information on Range Camp is available by contacting current Director, Shelly Taylor, by visiting the Nebraska SRM website at www.nesrm.org, or by "Liking" the Nebraska Youth Range Camp page on Facebook.

***UN-L Range Club
has jackets (L and
XL) available for sale
for \$35 each. Send
an email to the Club
unlrangeclub@yahoo.com
to order one
today.***

SRM Action Update Call

This is your chance to hear what the Board of Directors and various committees' have been working on. This conference call is open to anyone.

Day: 2nd Thursday of each month

Time: 11:00 mountain time

*Call in info: 213-416-6650,
enter code: 012010*



We'd love to share your great pictures with others! Send them to Kristin Miller and they'll be included in a future newsletter.

Plans Being Made for Range Camp 50th Anniversary

Past Range Camp Directors are in the early stages of planning for the 50th Celebration of the Nebraska Range Youth Camp. Plan to celebrate our Section's success in educating Nebraska's youth in sound range management for over 50 years next July or early August. Plans are being made for a tour, barbecue, and presentations from the decades of Range Camp. Stay tuned for more details! In the mean time, see if any of these past pictures bring back any memories.



Crew Bosses from the 23rd Annual Camp in 1986. Back row, L to R: Mike Lechner, Brent Olson, Mary (Raymer) Reece, Bob Pedulla, Steve Waller. Front row, L to R: Daryl Cisney, Trail Boss Pat Reece, Tom Dill



Dave Hamilton, long-time supporter of range camp discusses the Reed Hamilton Ranch grazing philosophies with campers during the ranch tour in the early 1990's.



Don Cox and others making plans for the day's activities at Range Camp in 1969.

"The NE Range Camp was probably the most intensely educational experience I had a chance to be a part of as a teenager. The quality of materials and speakers presented during the week-long Camp was on par with many of the seminars I now attend as an adult. The dedication and effort of the staff to creating a quality learning environment was outstanding. I truly believe that range camp was the first step in what I hope will be a lifelong pursuit of combining production agriculture with the preservation and restoration of the natural resources that I am privileged to be a steward of today. I hope it is an opportunity that will still be available for my children in the future." ~Pat Peterson, Camper, 1998, 1999

Update from the State Range Judging Committee submitted by Daryl Cisney

Yes, it's that time of year again. The Area and State Range Judging Contests are once again in the books, and what a successful year it's been again!

The Nebraska State Range Judging Committee is considered a Committee of the Nebraska Section SRM, but it is also a stand alone Committee that has one goal; providing the participants with the best Range Judging opportunity that is reasonably possible. The Nebraska State Range Judging Committee has members from many agencies and disciplines, many of which who are also members of the Nebraska Section SRM. All of the Committee participants are a necessary part of the Range Judging process. Many of the NE Section members are relied upon to provide the technical expertise to put a quality contest together.

And, as important as that is, other committee members "specialize" in the scoring process, which is often under-appreciated by the contestants, the Agricultural Education Instructors and the technical people. The Range Judging process relies upon many people who

are **all volunteers** to make the contests a meaningful experience for the participant – whether it is their first contest or their fifth contest. In short, we try to reach the "future"



2012 State Range Judging Champions, Ord High School. L to R: Cory Beran, FFA advisor, Cody Drudik, Dusty Staab, Dylan Miller, Taylor Hornickel, and Dave Ferrence FFA advisor.

of Range Management by providing the best contest possible.

This is my second year as the Nebraska State Range Judging Committee Chair. While it seems like I am experiencing somewhat of a sophomore slump. My goal is to improve my efforts for the future. Please help us with our outreach to the youth who have an interest in Range Management. Volunteer to assist with a contest in your area, if it works into

your schedule. But, I have to warn you, Range Judging can be habit forming. Get caught up in the excitement. At the very least, you will not believe how quiet 400 or more kids can be for 2 ½ hours until you see it (or don't hear it) in person.

In 2012, there were 1102 participants in the 5 Area Contests across Nebraska. In addition, the State Contest held at Stanton had an additional 369 participants. Unfortunately, due to a severe snow storm, the Old West Regional Range Judging Contest was cancelled. Thank you to everyone who helped to make the 2012 Range Judging program a success! This is clearly a team effort and all contributions are appreciated by the local contest committees and the students and adults who participate in these programs.

The longer you wait for something, the more you'll appreciate it when you get it. Anything worth having is definitely worth waiting for.

UNL Range Club Happenings submitted by Chelsea Luthy

The UNL Range Management Club had enjoyable adventures this year attending annual meetings and incorporating fundraising and social activities in the mix.

The Range Club began the year participating in the Nebraska Section of the Society of Range Management meeting held in Sidney, Nebraska in October 2011. Students participated in presentations and a crazy auction which is the club's main fundraising event for students to attend the national meeting. Other fundraising events included members working on range and forage research projects, selling coupons at Younkers and working at Noodles & Company for an evening. The Club has become active in managing the restored prairie at UNL's Prairie Pines northeast of Lincoln. The club is developing a management plan for the prairie with the vision of creating a diverse tallgrass prairie ideal for educational and recreational purposes. The club has initiated a monitoring program at the prairie involving grassland

production and botanical composition.

Eight undergraduate students belonging to the Range Management Club and eight range graduate students actively participated in the student contests, sessions, and meetings at the Annual Meeting of the Society for Range Management at Spokane, Washington in February 2012. Among other accomplishments, the Club's Undergraduate Range Management

students made oral and poster presentations in technical sessions on their graduate research.

On the social side of things, the club participated in the fall semester picnic with the Agronomy Club, organized an intramural broomball and volleyball team, ice skated in Spokane, WA, and also held a board game night to get to know other Range Club members.

The club had 8 undergraduates attend the Nebraska Section of the Society of Range Management meeting in Ogallala, Nebraska this October. We participated in the crazy auction and made over one thousand dollars! The current leadership team is: Ashley Burns, Secretary, Kyra Baldwin, Treasurer, Jeanna Jenkins, Vice President, and Chelsea Luthy, President. Many students are involved in Undergraduate Range Management Exam practice, Plant ID practice, and Extemporaneous speaking this fall semester with plans to travel to Oklahoma City, Oklahoma for the Society for Range Management meeting at the beginning of February 2013.



Range Club Members & Advisors at the Department of Agronomy and Horticulture Spring Banquet 2012, from left to right: Carol & Walt Schacht (co-advisor), Chelsea Luthy, Kyra Baldwin, Jeanna Jenkins, Ellen Miller, Lars Anderson, Jess Milby, Laura Snell, Ben Beckman, John Guretzky (co-advisor).

Exam team placed 11th out of 24 teams and team member Joe Schumacher finished in 9th place out of the 204 students. Students also participated in the International Student Conclave (ISC) Club member Jeanna Jenkins was elected the 2012/13 Reporter of the ISC. The UNL graduate stu-

Plans Being Made for 2013 Section Meetings

The 2013 Nebraska Section SRM Annual Meeting is planned for October 8-10 in Ainsworth. The theme for the meeting will be "The Good, The Bad, and The Reality". The meeting will focus on recovery after the fires and drought that much of Nebraska faced in the summer of 2012. The tour will include stops to look at recovery efforts in the Nibrobra valley.

Please contact Bob Broweleit if you have suggestions or questions regarding next year's meetings.



Photo by Jess Milby

UN-L Range Club 2012-13 Officers

President:
Chelsea (Fullerton)
Luthy

Vice President:
Jeanna Jenkins

Treasurer:
Kyra Baldwin

Secretary:
Ashley Burns

*It isn't what we say or
thing that defines us, but
what we do.*

Jane Austen

Show your
support of
SRM!

We have a supply
of Nebraska
Section and SRM
ball caps available
for purchase.
Contact Kristin
Miller for details.

Do You Know What Happened in Nebraska... by Jeff Nichols, Historian

Five Years Ago (2007) The Nebraska Section officers were: Dana Larsen, President; Jerry Volesky, Past President; Mary Reece, President Elect; Leslie Stewart-Phelps, Secretary/Treasurer; Jamie Hornickel, Newsletter Editor; Doug Whisenhunt and Michael Croxen were Council Members.

The 2007 Nebraska Section annual meeting was held in Grand Island October 10-12. The meeting was held jointly with the Wildlife Society. The topic for the meeting was "Invasive Plant Control". Presenters talked about noxious weeds of Nebraska and targeted grazing. The meeting concluded with a tour of the Reeves ranch northeast of St. Paul, where attendees observed mechanical cedar tree removal and grazing of leafy spurge with goats. The tour ended with a goat BBQ.

Kristin Miller of Lodgepole was presented the NE Section Range Management Service Award. The Rangeman's award was not presented. Jake Nelson of Dalton was selected to represent the NE Section for the High School Youth Forum at the meetings in Louisville, KY. The NE Section presented Justin Lemmer of Cozad and Jess Milby of Fullerton with the undergraduate scholarships. Mary Schrader, formally of Benkelman, was presented with a Special Award for her service to the NE Section.

Ten Years Ago (2002) The Nebraska Section officers were: Teri Edeal, President; Walt Schacht, Past President; Scott Willet, President Elect; Bob Sprentall, Secretary/Treasurer; Sherry Connot, Newsletter Editor; Al Steuter and Chuck Butterfield were Council members.

The stated major goal for the Nebraska Section was to begin implementation of the following objective: "In the next five years develop a strategy to coordinate and implement a K-12 curriculum package in cooperation with the University Extension and the Nebraska Environmental Trust Grant. Utilize educational curriculum ideas that currently exist like the Sod Box and Tree Trunks from the Nebraska National Forest. Coordinate with Range Education Council and the Center for Grassland Studies."

The State Range Judging Contest held near O'Neill had 341 participants. The top senior individual was Brady McCumber of Atkinson-

West Holt and the top junior individual was Ransom Sitz of Burwell.

Michael Gillilan of Hardy and Cherette Mastny of Bellwood were presented the NE Section scholarships at the 2002 annual meeting held at Lexington, NE. One high school student presented a paper at the meeting. Blake Thompson of Dunning gave a presentation on "All Terrain Vehicle in the Sandhills".

The 2002 Rangeman's Award was presented to the Dodson Ranch and Farm of Maywood Nebraska. Jill Epley received the Range Service Award.

Drought conditions caused major depletions of grazing resources and contributed toward stresses on livestock and producers. 2002 was the driest year on record throughout much of west central and western Nebraska.

Twenty Years Ago (1992) The Nebraska Section Officers were: Sheila Valasek (Luoma), President; James O'Rourke, President Elect; Catherine Mills, Past President; Daryl Cisney, Secretary Treasurer; Mary Schrader, Newsletter Editor; Bill Carhart and John Gross were Council Members.

The NE Section met at Fort Robinson for the annual meeting. Over 190 people attended to help celebrate the 40th anniversary of the NE Section.

The Nebraska Section awarded James T. O'Rourke of Chadron the Range Management Service Award. The Rangeman's award was presented to Terry and Cheri Enfield from the Enfield Ranch Co. of Arthur. Donald A. Cox of Mullen was presented with a Special Award of Merit for his many years of support and service to SRM. The Undergraduate Scholarships were awarded to Beth Pinckney of Firth and Wade Dickinson of Lodgepole.

Thirty Years Ago (1982) The Nebraska Section officers were: Mick Helberg, President; Jim Stubbendieck, Past President; Pat Reece, President Elect; Lowell Moser, Secretary-Treasurer; Steve Waller, Newsletter Editor; Nadine Bishop and

Brent Lathrop were Council members.

The NE Section meeting was held at Ogallala November 4-5. Jan Duck, acting Executive Secretary from the Denver office and Dr. Fee Busby of Laramie, WY were official guests. Approximately 80 people attended the Awards banquet. John Colwell from the Pepper Creek Ranch of Hay Springs received the Rangeman's Award. Mr. and Mrs. Elmer (Pete) Gudmundsen of Sun City, Arizona, were presented the Range Management Service Award. The Gudmundsen's had given the 12,817 acre R and C Ranch near Whitman to the University of Nebraska Foundation for range research purposes. The two NE Section undergraduate scholarships were presented to Andrea Mann of Winside and Lynn Atkins of Kimball.

Forty Years Ago (1972) The University of Nebraska, Board of Regents approved the long term lease (10 years) of rangeland near Tryon for use as the Sandhills laboratory (SAL) to be used to conduct range and forage research.



Pawnee Buttes Seed Inc.

**We sell seed for every project
Native Grasses, Forbs, Shrubs,
Wetland Species**



- ◆ Biosol Organic Fertilizers
- ◆ Mycorrhizal Inoculum
- ◆ Truax Grass Drills
- ◆ Super Tack Tackifier
- ◆ Mat Fiber Mulch
- ◆ Custom Consultation
- ◆ Project Consultation

**Don Hajar * Glen Ledall
Dave Rady * David Moore
Greeley, CO**

**970-356-7002 * 800-782-5947
www.pawneebuttesseed.com
info@pawneebuttesseed.com**

What Happens at the Section Meetings...



...Ends Up in the Newsletter



Photo by Jess Milby, Twin Platte NRD

We're on the web!

**Check out our
redesigned
website at
nesrm.org**



Calendar of Events

Skillful Grazing Management, November 26-29, 8 Nebraska Locations

5th National Grazing Conference, December 9-12, 2012, Orlando, FL

Managing Drought workshop series, December 10-11, 2012, Wray, CO

Nebraska Range Youth Camp, June 10-14, 2013, Halsey, NE

Nebraska Grazing Conference, August 13-14, 2013, Kearney, NE

Nebraska Section Meetings, Ainsworth, NE; October 8-10, 2013

Annual Meetings, Technical Trainings, and Trade Show Schedules

Oklahoma City, OK; February 2-6, 2013

Orlando, FL; February 7-15, 2014

Sacramento, CA; January 30-February 7, 2015

Corpus Christi, TX; January 29-February 6, 2016

